

Wallington Primary School - 122 years



NEXT MEETING - Tuesday 26 April 6.30pm

In the Staff room, everyone welcome!!!

Oh Sugar, Sugar.

We are still taking sugar donations for our delicious Strawberry Fair Strawberry Jam. Regular white sugar is fine. Please consider buying extra on your next shop and dropping it in to the box in the school foyer near the office.



Are you feeling Lucky?

This year we are changing the way we do Lucky Dip bags. This year our Lucky Dip bags will replace the commercial Show Bags that we have had in the past.

They will each sell for \$5 and will be put together from donations from the school community.

Donations for the Lucky Dip can be left in a tub at the office, please see the list of suggested items (*NEW items only please*) and keep an eye out over the Holidays to help make it the luckiest Lucky Dip ever!

- Small Toys
- Books
- Seeds
- Stationery
- Wrapped Confectionery
- Stickers
- Party Favours
- Bubble Mixture
- Anything that will make someone feel lucky!



PLEASE NO CHOCOLATE ITEMS for health and Safety reasons.

Thanks for the Tomatoes!



Thanks so much for the tomato donations, we really relish the generosity!

We now have enough, no more please.

Working Bee

Sun 22nd May 9am - 11am

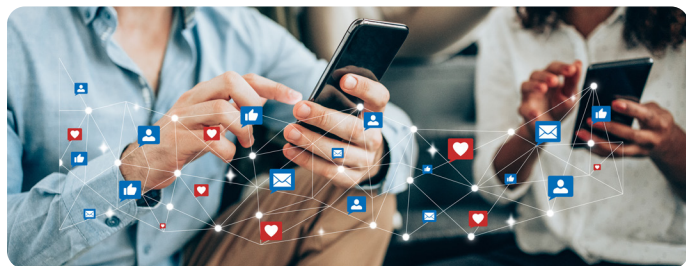
The weekend before the fair is a last chance to help our school look its best. Please come along with your gardening tools ready to get stuck into the following jobs:

- Grass Mowing - school and roadside edge
- Leaf Sweeping
- Erecting larger marquees
- Organising storage shed
- Clean hall, including kitchen
- General tidy up



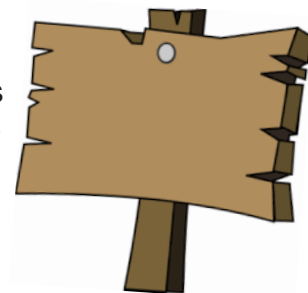
strawberry
FAIR
2022 Countdown

7 weeks to go!



It's a Sign!!!

It's time for us to get the word out and be as visible as possible. Do you or a relative have a fence in great spot to put a sign? Please text the address to Amber 0410 693 439 and she will put the signs up over the holidays.



Let's get social!

Remember to follow the Strawberry Fair on social media so you can **like**, **love**, **comment** and **share**. Each time you do it helps promote our fair and build excitement.
#wallingtonstrawberryfair

 www.facebook.com/wallingtonstrawberryfair

 www.instagram.com/wallingtonstrawberryfair

 www.twitter.com/strawberryfair1

That's Entertainment!

Returning to the main stage this year will be the talents of local singer/songwriter Anna Victoria! A Strawberry Fair regular since 2019 Anna's soulful tunes are not to be missed.



Thank You 'Berry Much!

The Strawberry Fair is a true community event that wouldn't be possible without the efforts of the fantastic contributions of our school families and staff, in particular those parents that have taken on committee roles and / or signed on for crucial roles on the day. We can't thank you enough!

*Wishing everyone a happy,
safe and chocolatey
Easter break!*

